

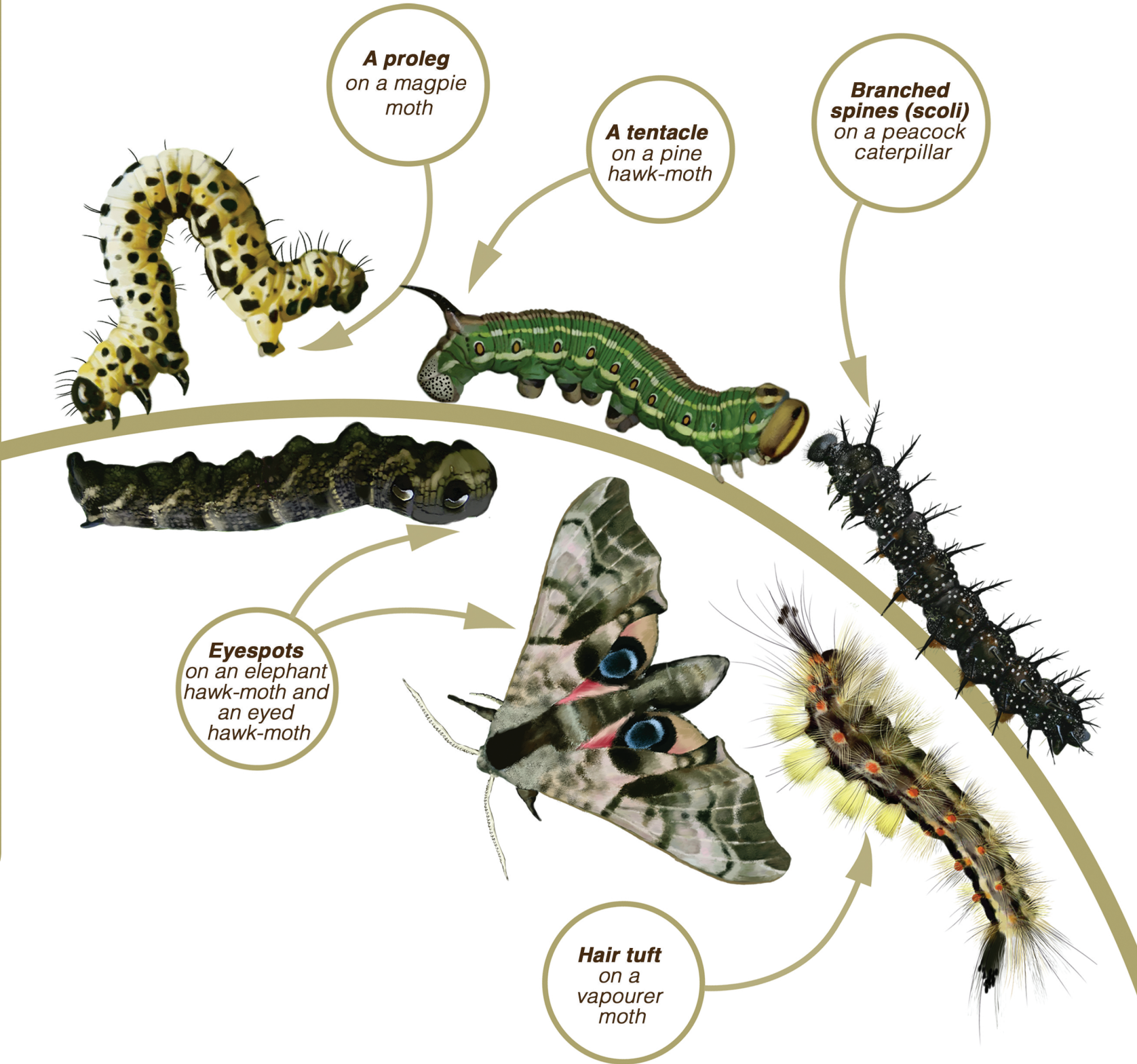
“This document has been produced with the financial assistance of the Estonia – Latvia – Russia Cross Border Cooperation Programme within European Neighbourhood and Partnership Instrument 2007 – 2013. The contents of this document are the sole responsibility of Tartu Environmental Education Centre and can under no circumstances be regarded as reflecting the position of the Programme, Programme participating countries, alongside with the European Union.”

“Estonia – Latvia – Russia Cross Border Cooperation Programme within the European Neighbourhood and Partnership Instrument 2007-2013 financially supports joint cross border development activities for the improvement of the region’s competitiveness by utilising its potential and beneficial location on the crossroads between the EU and Russian Federation. The Programme web-site is www.estlatrus.eu.”

NOTICE NATURE!

A selection of Tartu butterflies

Species	Catterpillar length	Host plant	Pupation site	Flight Time
Swallowtail butterfly – <i>Papilio machaon</i>	Up to 41 mm	Milk-parsley, dill	On a plant stem	May – August
Black-veined white – <i>Aporia crataegi</i>	Up to 35 mm	The rose family, rowan, cotoneaster, apple	On a plant	Mid-June – mid-July
Brimstone butterfly – <i>Gonepteryx rhamni</i>	Up to 33 mm	Alder buckthorn	On a plant	April – mid-June, July – September
Red admiral butterfly – <i>Vanessa atalanta</i>	Up to 35 mm	Stinging nettle, small nettle	On a plant	May, mid-July, August
Small tortoiseshell butterfly – <i>Aglais urticae</i>	Up to 22 mm	Stinging nettle	On a host plant	End of April – mid June, July – September
Peacock butterfly – <i>Inachis io</i>	Up to 42 mm	Stinging nettle	On a plant	April – mid-June, July – September
Map butterfly – <i>Araschnia levana</i>	Up to 22 mm	Stinging nettle	On a plant, rocks	May – beginning of June, July – beginning of August
Privet hawk-moth – <i>Sphinx ligustri</i>	Up to 100 mm	Lilac, ash, honeysuckle	In the soil	Beginning of June, beginning of August
Eyed hawk-moth – <i>Smerinthus ocellatus</i>	Up to 80 mm	Willow trees	In the soil	Mid-May – August
Poplar hawk-moth – <i>Laothoe populi</i>	Up to 65 mm	Mainly aspen	In the soil	End of May – mid-August
Pine hawk-moth – <i>Hyloicus pinastri</i>	Up to 80 mm	Scots pine, Norway spruce	In the soil	End of May – beginning of July
Elephant hawk-moth – <i>Pergesa elpenor</i>	Up to 80 mm	Rosebay willowherb, Virginia creeper	In the soil	End of May – beginning of August
Small elephant hawk-moth – <i>Pergesa porcellus</i>	Up to 60 mm	Galium species	In the soil	End of May – mid-July
Puss moth – <i>Cerura vinula</i>	Up to 65 mm	Willows	On a plant stem in a cocoon	May – beginning of July
Buff-tip moth – <i>Phalera bucephala</i>	Up to 60 mm	Mainly oak	In the soil	End of May – August
Goat moth – <i>Cossus cossus</i>	Up to 65 mm	Burrowing in the trunks of deciduous trees	In a cocoon of wood debris	End of June – mid July
Garden tiger moth – <i>Arctia caja</i>	Up to 60 mm	Herbs	In litter and plant remains	July – mid-August
Vapourer moth – <i>Orgyia antiqua</i>	Up to 35 mm	LehtpuudDeciduous trees	In a cocoon on a host plant	September
Oak eggar – <i>Lasiocampa quercus</i>	Up to 65 mm	Deciduous shrubs	In a cocoon in dry grass	Mid-June – end of July
Monk moth – <i>Panthea coenobita</i>	Up to 60 mm	Norway spruce	In a cocoon on a tree trunk	June – July
Figure of eight moth – <i>Diloba caeruleocephala</i>	Up to 40 mm	Members of the rose family and other deciduous trees	In a cocoon on a tree trunk	September – October
Sycamore moth – <i>Acronicta aceris</i>	Up to 40 mm	Maple	In a cocoon in dry grass	June – July
Alder moth – <i>Acronicta alni</i>	Up to 35 mm	Alder, birch	In rotten wood	End of May – beginning of July
Magpie moth – <i>Abraxas grossulariata</i>	Up to 35 mm	Deciduous trees and shrubs	On a host plant	July – beginning of August



part-financed by the European Union

united by borders



Tartu Keskkonnahariduse Keskus

